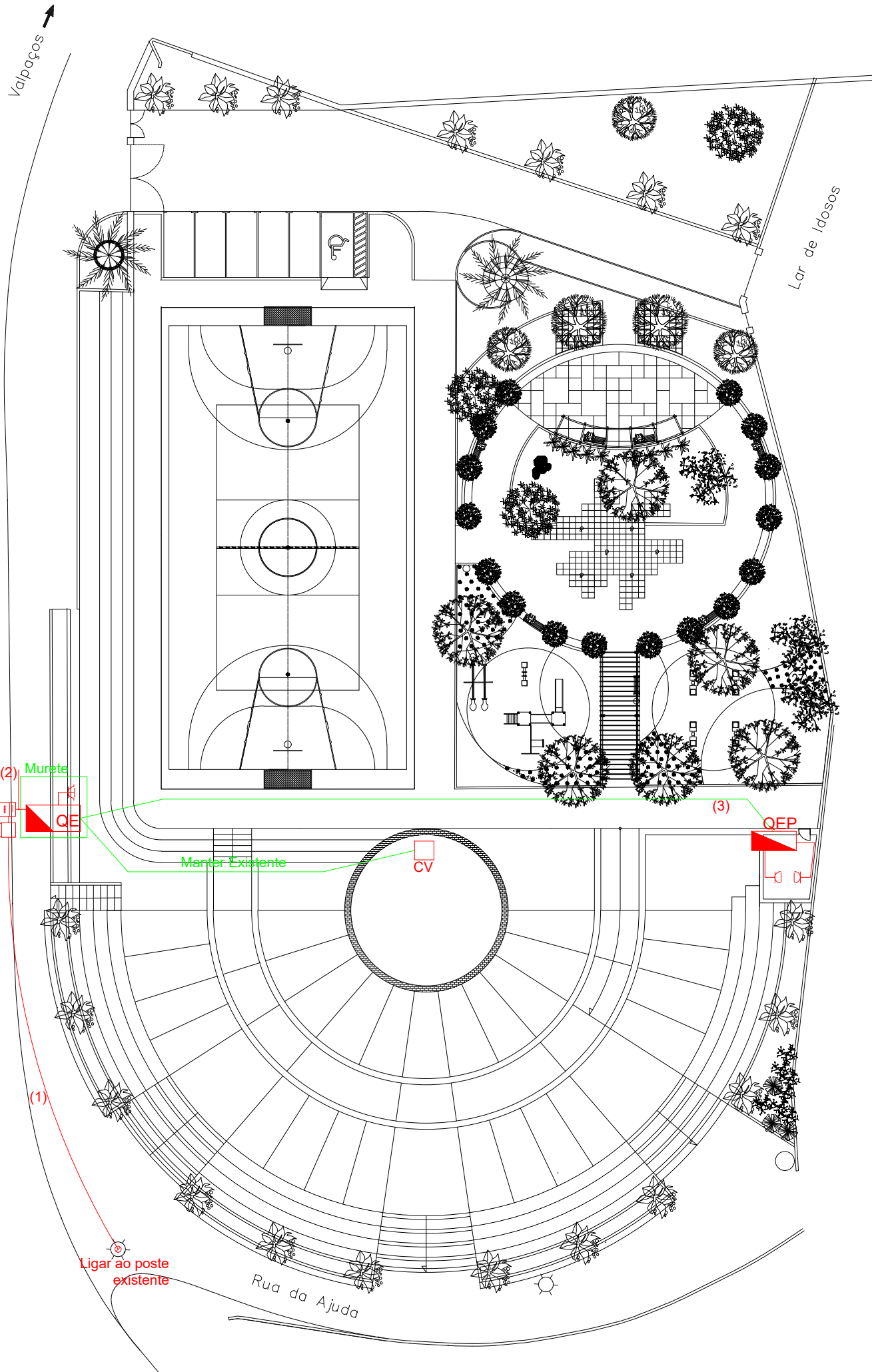





Estrada Nacional(206)





SIMBOLOGIA:

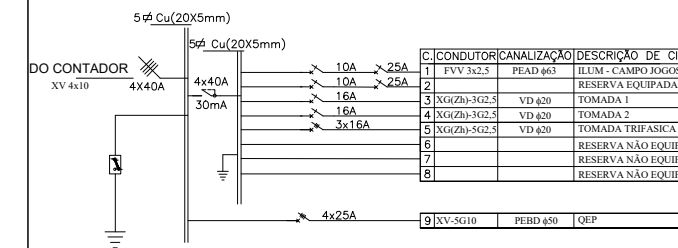
-  **QE** QUADRO ELÉTRICO
-  TOMADA MONOFÁSICA COM TERRA, OBTURADORES E TAMPA
-  TOMADA TRIFÁSICA TIPO CEE 4 POLOS (3P+T) E TAMPA

NOTAS:

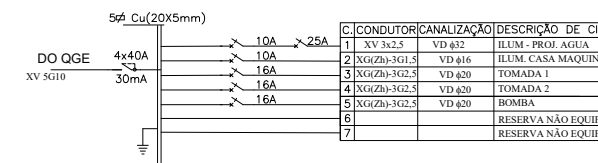
- (1) - LSVAV 4x16 / Corrugado Ø 63 mm (IK>=08)
- (2) - XV 4x10 /PEAD Ø 50mm (IK>=08)
- (3) - XV 5G10 /PEAD Ø 50mm (IK>=08)

-  TUBAGEM A INSTALAR
-  TUBAGEM EXISTENTE

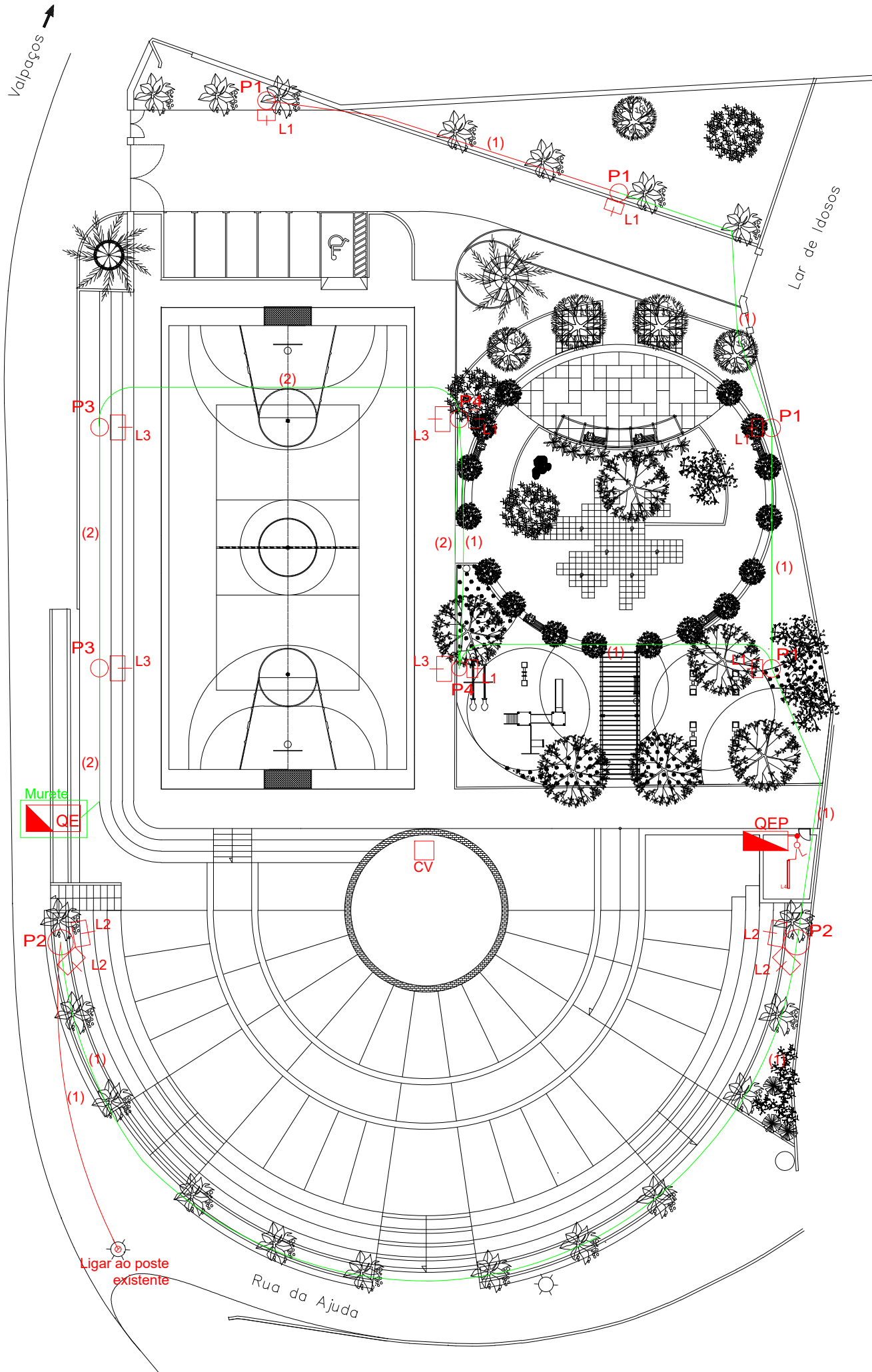
QUADRO ELÉTRICO GERAL  
(IP43 + IK04)






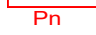
QUADRO ELÉTRICO PARCIAL  
(IP43 + IK04)



Estrada Nacional(206)





SIMBOLOGIA:

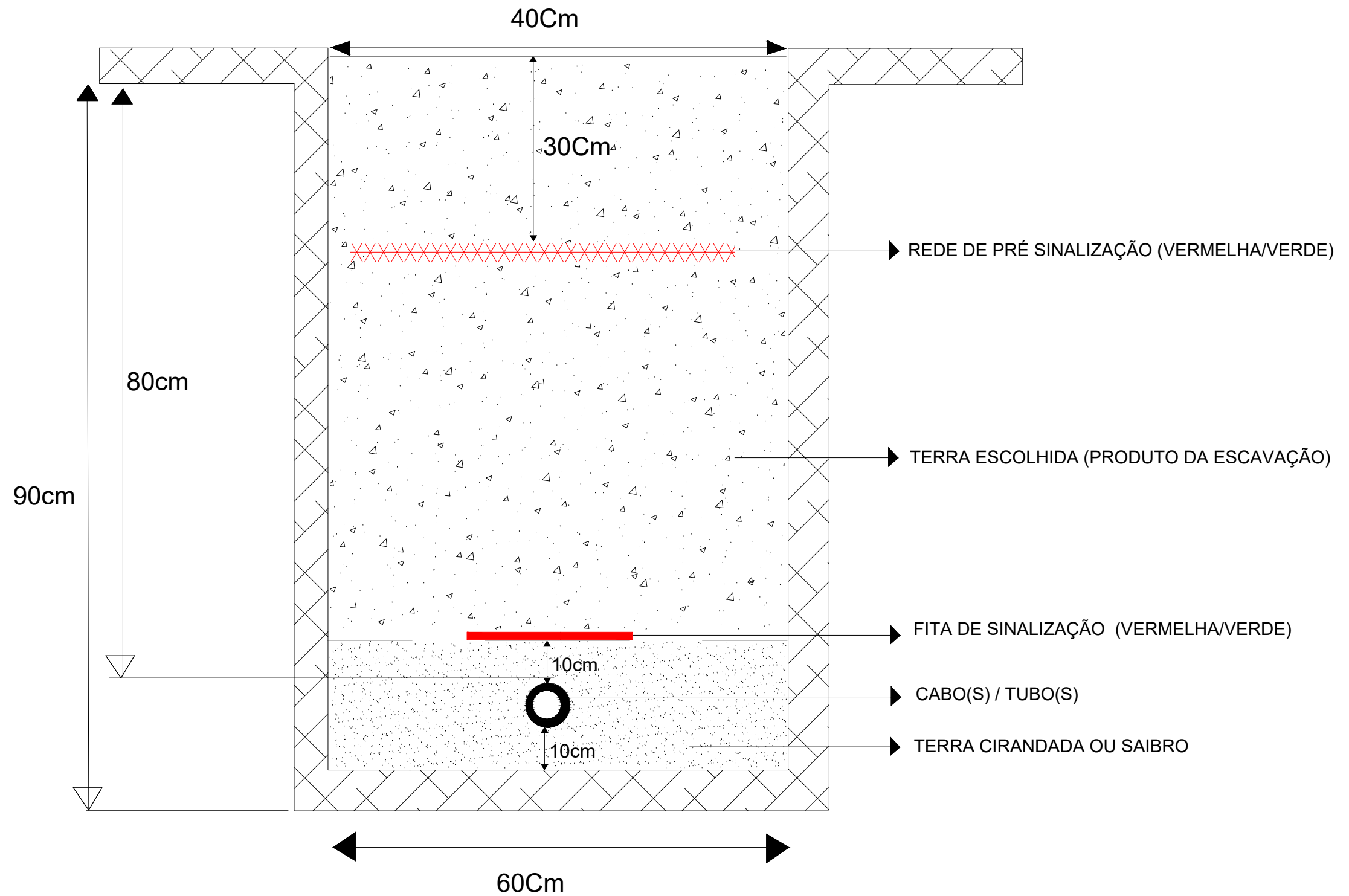
-  **QUADRO ELÉTRICO**
-  **INTERRUPTOR UNIPOLAR**
-  **PONTO DE LUZ**  
 P1 - Coluna de 5m com 1 luminária topo  
 P2 - Coluna de 8m com 2 luminarias L2 topo (orientáveis)  
 P3 - Coluna de 8m com 1 projetor L3 topo (orientável)  
 P4 - Coluna de 8m com 2 luminarias L1 a 5m / L3 a 8m (orientáveis)  
 L1 - TECEO 1 24 LEDs 700mA NW Flat, IP66  
 L2 - SCULPFLOOD 60 32 LEDs 600mA, IP66  
 L3 - BVP130 LED160-4S/740 A, IP66
-  **PONTO DE LUZ**  
 L4 - Luminária estanque, 25Watts, IP65

NOTAS:

- (1) - LSVAV 4x16 / Corrugado Ø 63 mm (IK>=08)
- (2) - FVV 3x2.5 (IK>=08)

-  **TUBAGEM A INSTALAR**
-  **TUBAGEM EXISTENTE**

# VALA TIPO 1



ARRANJO URBANÍSTICO DO LARGO DAS FESTAS EM ARGERIZ - FASE III

Desenho: Iluminação Geral

Requerente: Município de Valpaços

Desenhou: Luís Mesquita (Eng.)

Projectou:

Aprovou: Normando Vieira (Eng.)



Data: ABR.2024

Esc.: 1/100

03